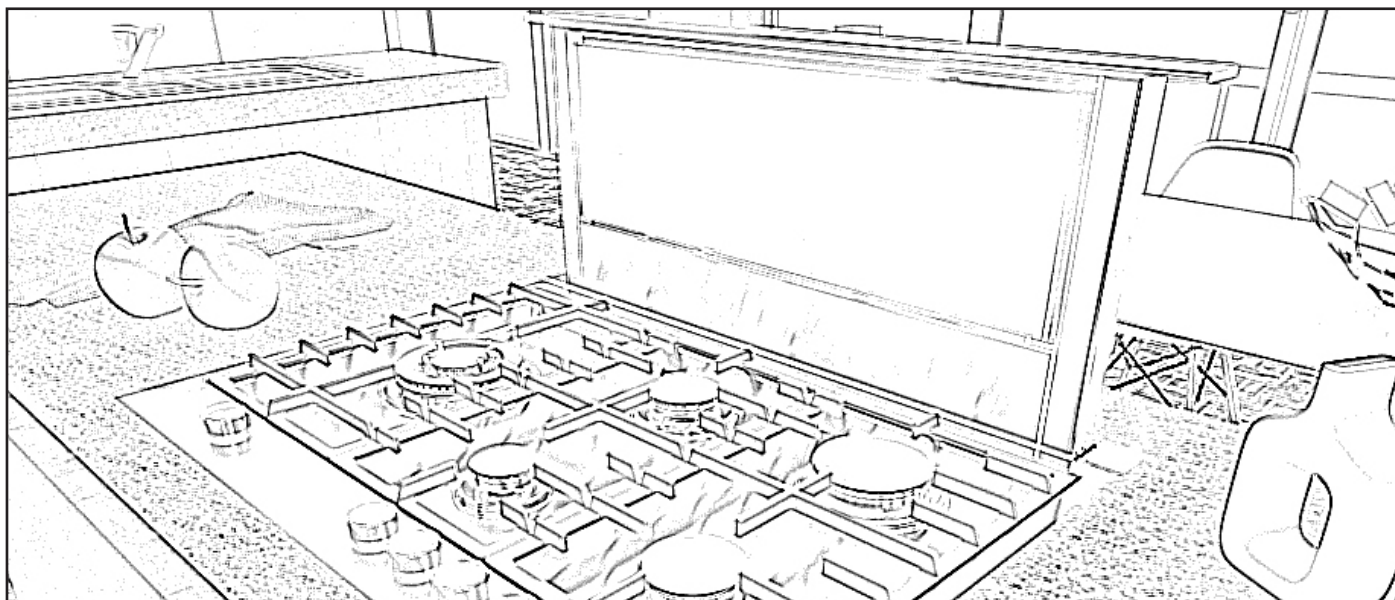




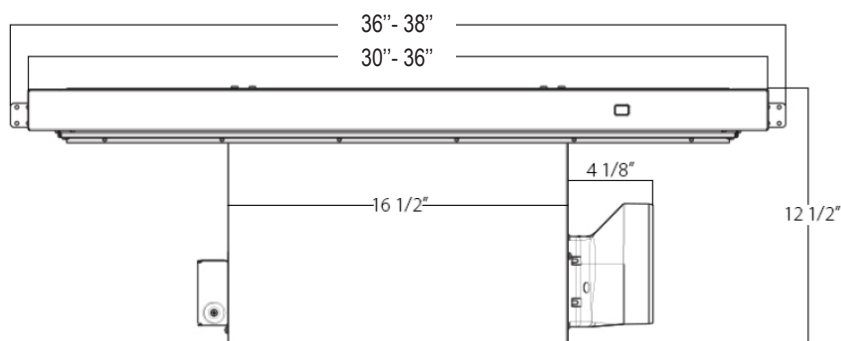
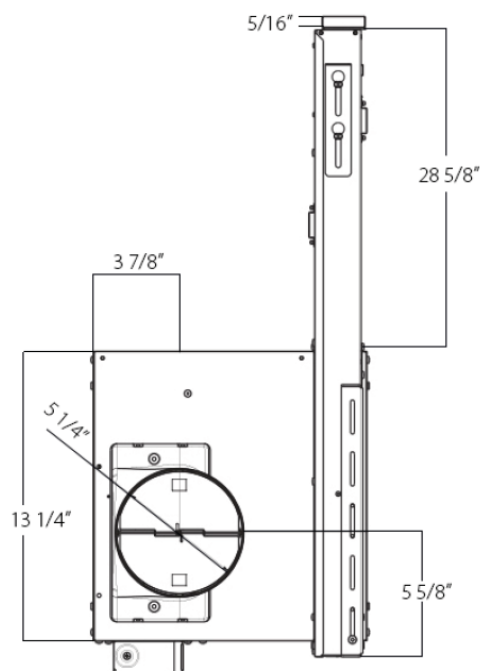
| Model | |
|---------------------------|---|
| ERS636SS | |
| Features | |
| Controls | Electronic Rotating Disc (Built-in into counter) |
| Blower Type | 4-speed, 600 CFM |
| Blower Performance | Speed 1, 205 CFM, 1.9 Sones |
| | Speed 2, 350 CFM, 3.4 Sones |
| | Speed 3, 510 CFM, 6.0 Sones |
| | Speed 4, 600 CFM, 8.0 Sones |
| Filter Type | 14" Hight Downdraft Perimeter Aspiration (with Mesh Filter) |
| Ducting | Ducted Installation Only |
| Duct transition | 3¼" X 10" (Rear) Back Draft Damper |
| | Included |
| | 6" Round with Back Draft Damper (side) |
| Exterior Appearance | |
| Stainless Steel grade | 430 |
| Electrical Requirements | |
| Electrical requirements | 120V-60 HZ / 410 Watt at 3.4 Amps |
| Dimensions | |
| Dimensions | 36" (W) X 12½" (D) X 14" (H) |
| Warranty | |
| Complete 2 years warranty | Entire Appliance; In-Home; Parts & Labour |



RISE

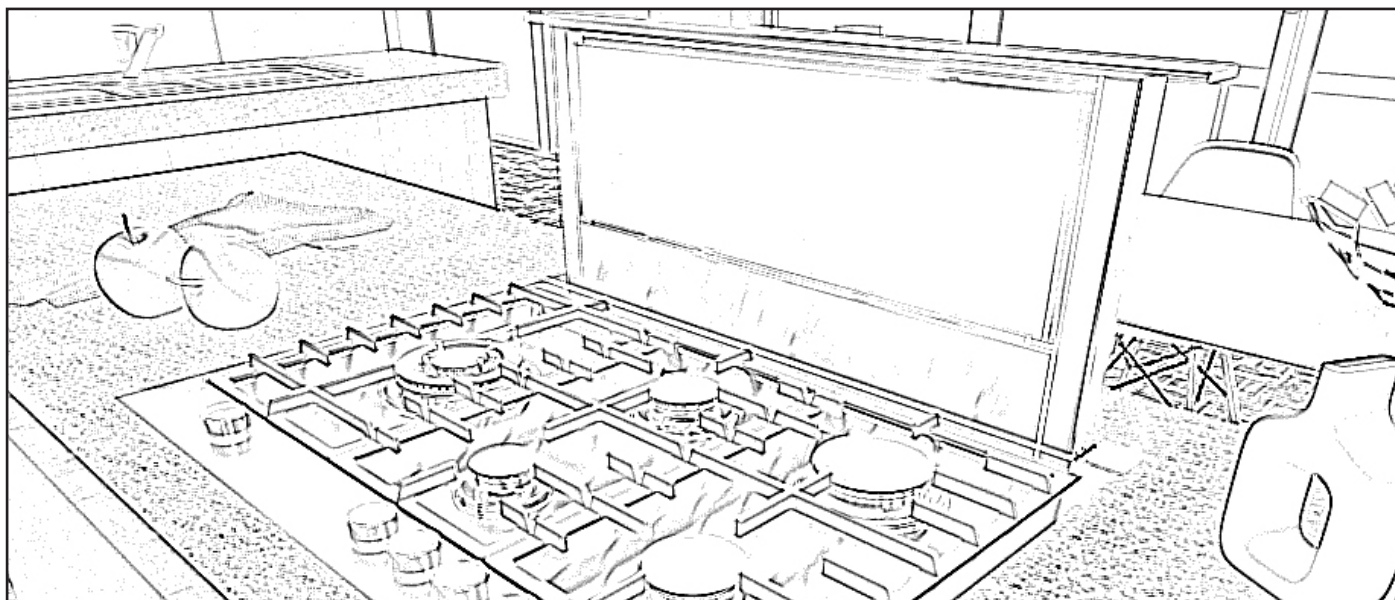
Installation Requirements
ERS630/636SS

Dimensions



The information contained herein is based on sources that we believe to be reliable, but is not guaranteed by us, may be incomplete or may change without notice

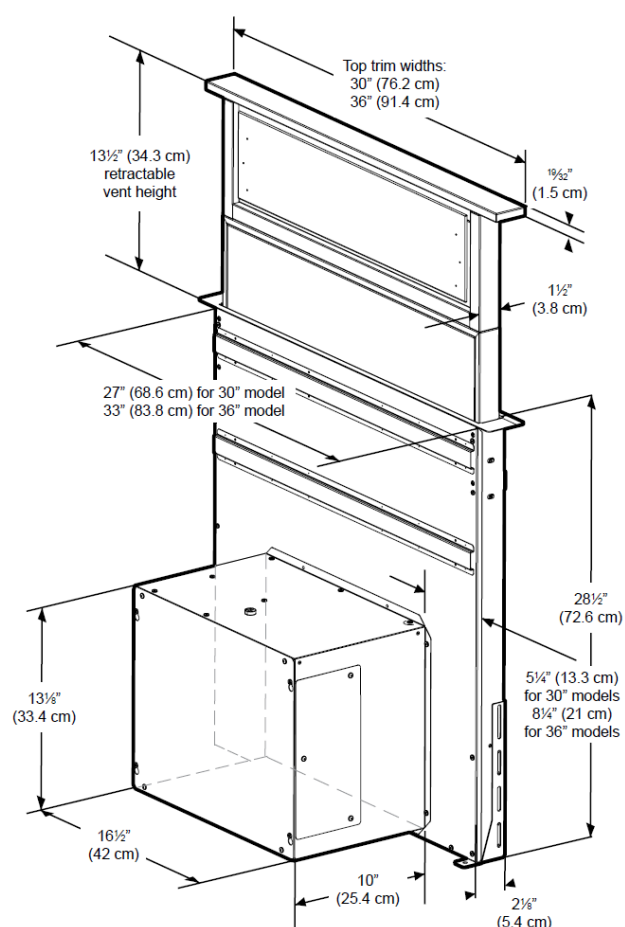
Need technical assistance ? 1(888) 651-2534



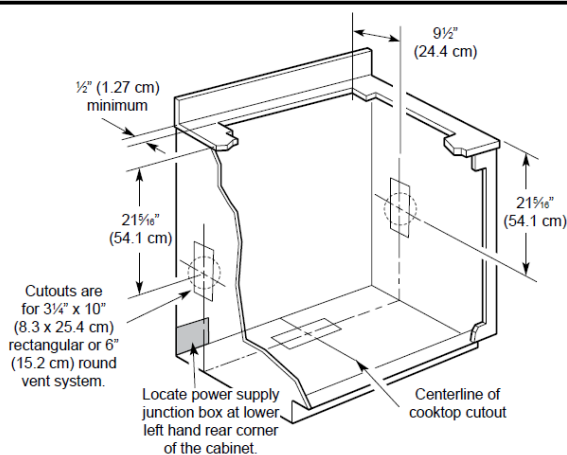
RISE



Product Dimensions



Cabinet Dimensions

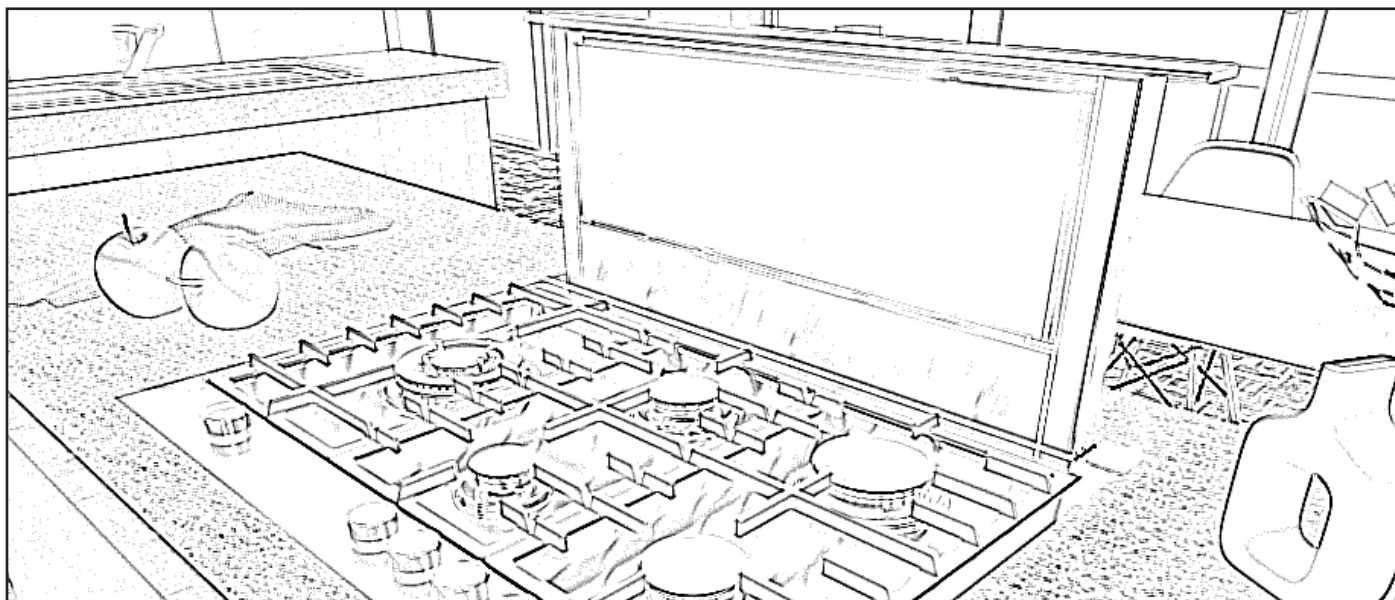


NOTES:

- See cooktop manufacturer's instructions for cooktop cutout depth and width.
- Use dimensions for vent system cutout location that applies to your installation.
- Interior mounted blower systems connect with 3¼" x 10" (8.3 x 25.4 cm) rectangular or 6" (15.2 cm) round vent system. The cutout locations for this vent system will depend on your specific installation.

The information contained herein is based on sources that we believe to be reliable, but is not guaranteed by us, may be incomplete or may change without notice

Need technical assistance ? 1(888) 651-2534



RISE

 elica
aria nuova

Countertop Cutout Dimensions

IMPORTANT: Countertops with a bull-nosed front edge are not recommended for these installations.

Some models require a countertop deeper than 25" (63.5 cm); see the following "Countertop Cutout Dimensions Chart."

To avoid mistakes, it is recommended that the cooktop and vent cutouts be drawn on the countertop before making any cutouts.

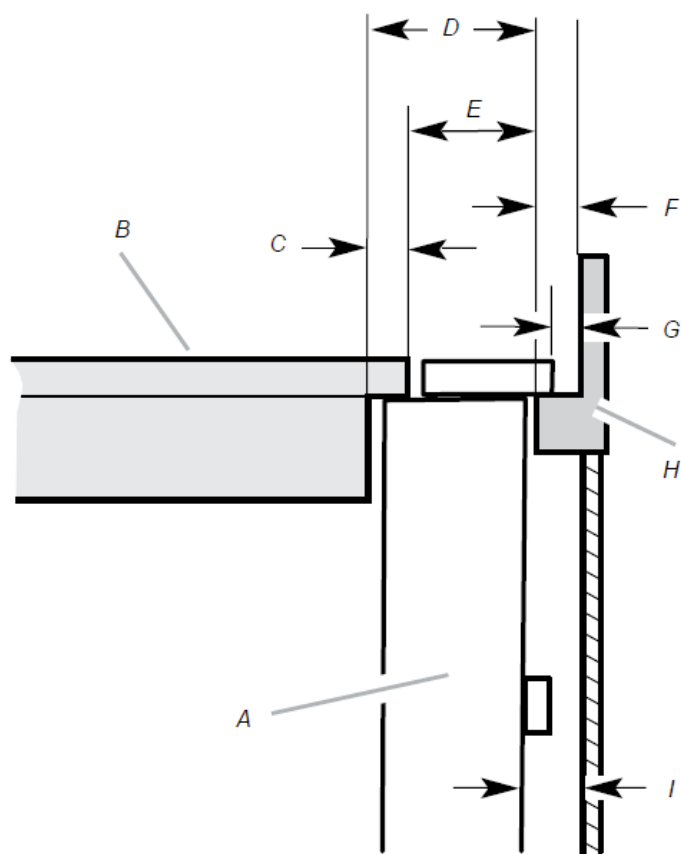
See the Installation Instructions that came with your cooktop for complete cutout dimensions, location dimensions and installation details.

The information contained herein is based on sources that we believe to be reliable, but is not guaranteed by us, may be incomplete or may change without notice

Need technical assistance ? 1(888) 651-2534



RISE

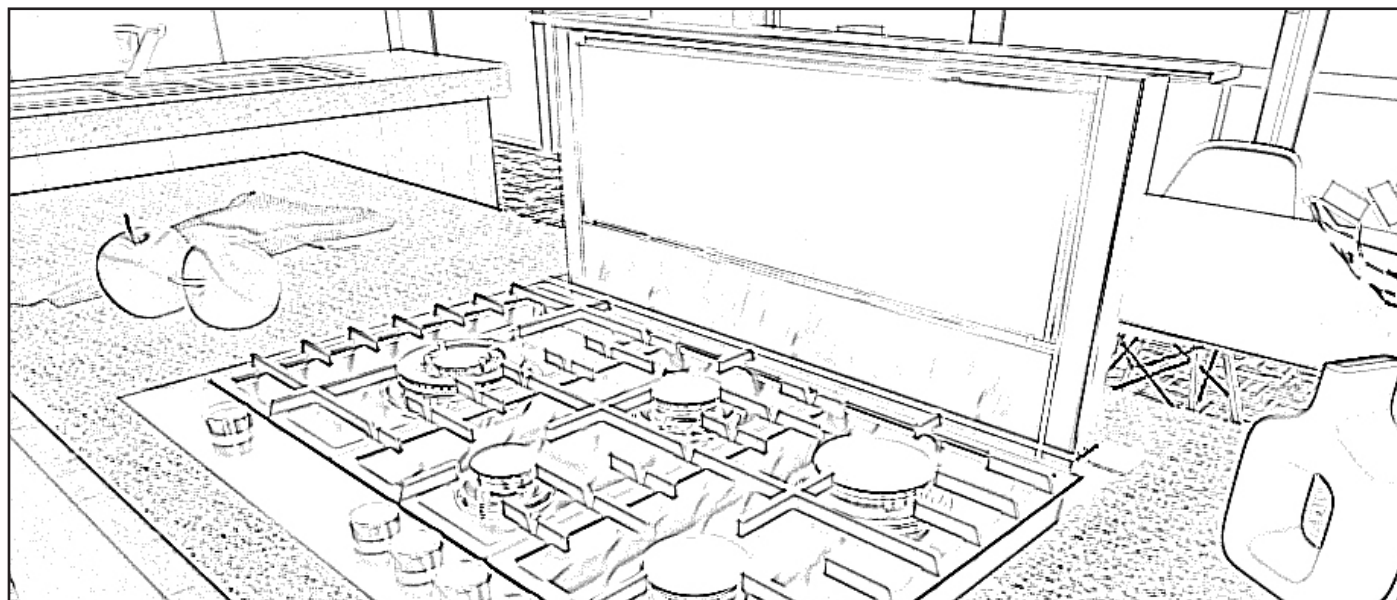


- A. Downdraft vent
- B. Cooktop
- C. Measurement of cooktop rear overhang
- D. D = Measurement of cooktop rear overhang (C) + 2 1/2" [61 mm] (E)

- E. 2 1/2" (61mm)
- F. 1/2" (12.7 mm) minimum
- G. 1/4" (6.4 mm) minimum
- H. Countertop and backsplash
- I. 1/2" (12.7 mm) minimum

The information contained herein is based on sources that we believe to be reliable, but is not guaranteed by us, may be incomplete or may change without notice

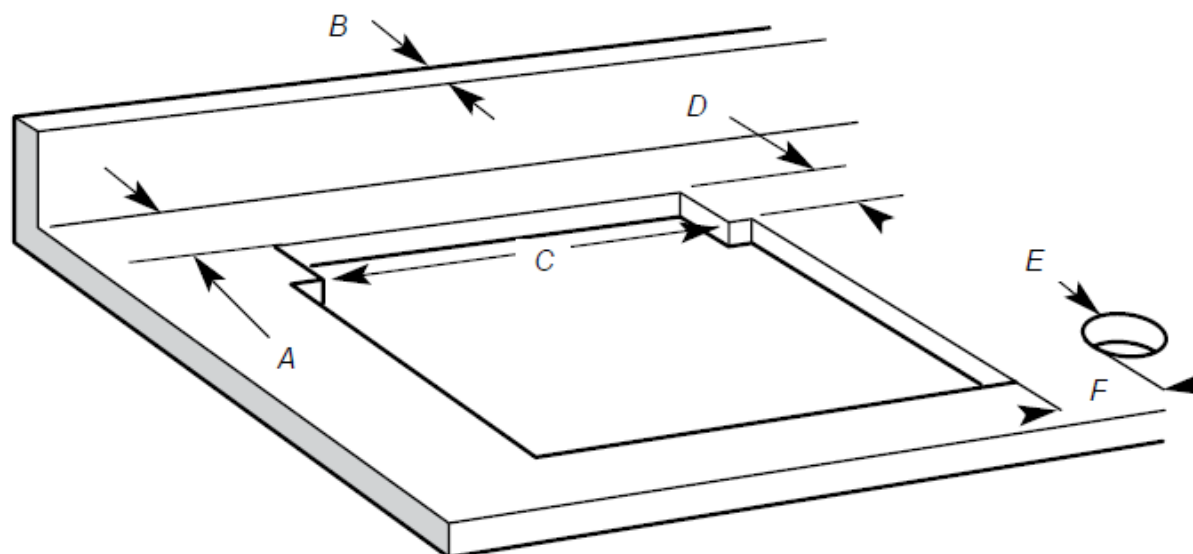
Need technical assistance ? 1(888) 651-2534



RISE

 elica
aria nuova

Countertop Cutout Dimensions Chart



A. $\frac{1}{2}$ " (12.7 mm) minimum to backsplash or rear wall

B. $\frac{3}{4}$ " (19.1 mm) maximum backsplash depth

C. $27\frac{1}{2}$ " (69.9 cm) on 30" (76.2 cm) models
 $33\frac{1}{2}$ " (85.9 cm) on 36" (91.4 cm) models

D. D = Measurement of cooktop rear overhang + $2\frac{1}{2}$ " (61mm)

E. $\varnothing 2\frac{5}{16}$ " (6.5 cm). The control can be installed in both left or right sides.

F. Minimum distance from cooktop 4" (10 cm)
maximum distance from cooktop 8" (20 cm)

The information contained herein is based on sources that we believe to be reliable, but is not guaranteed by us, may be incomplete or may change without notice

Need technical assistance ? 1(888) 651-2534