

HWgb 1803

Fully Integrated Wine Cabinet



 GERMAN
ENGINEERING

LIEBHERR

Quality, Design and Innovation

The innovative and superbly designed **HWgb 1803** wine cabinet is designed for today's modern kitchen. Featuring high performance technology alongside easy-to-use features, the HWgb 1803 proves that it's possible to save energy without compromising convenience and design. Employing state-of-the-art climate technology with heating and cooling circuits, alongside FreshAir activated filtration, the HWgb 1803 ensures the very best conditions for wines to quietly mature and develop their full flavor. Precision electronics, specialized compressors, and a variety of additional innovative features, make the HWgb 1803 the ideal model for optimally storing wine.

The **HWgb 1803** includes TipOpen technology – the perfect solution for hands-free kitchen designs. When the glass door is gently tapped, TipOpen technology partially opens the cabinet, facilitating further opening. If the door is not fully opened within three seconds, the door will self-close, ensuring that ideal air humidity is maintained within cabinet. When fully opened, the door opens downward like an oven.

The easy-glide accessory drawer can be used to store wine accessories directly below the **HWgb 1803**. The accessory drawer is available in black glass to match the HWgb 1803 and your custom cabinetry.



Fully Integrated Wine Cabinet

HWgb 1803 GrandCru

LED

Wine

Tip
Open

Soft
System

Telescopic
Rails

ADA
Compliant



Energy consumption (kWh/y)
Estimated Yearly Energy Cost in US \$*
Sound rating dB(A)**
Total capacity cu.ft. (l)
Max. No. of Bordeaux bottles (0.75 l)
Number of shelves
Shelves on telescopic rails
Shelf material
Electronic control
Temperature range °F (°C)
Temperature zones
Interior light
Door alarm
Safety thermostat
Activated Charcoal filter
Door type
SoftSystem
Product dimensions (H/W/D) in. (cm)
Cut out dimensions (H/W/D) in. (cm)
Net weight lbs. (kg)
Voltage V/Hz

296
–
36
1.6 (46)
18
3
2
Beech wood shelves
LCD temp. display, touch electronic
+41°F to +68°F (+5°C to +20°C)
1
LED lighting permanently on, dimmable
acoustic
yes
yes
black insulated glass door, handle and frame free
yes
17 11/16" / 21 7/8" / 22 1/16" (44.8/55.5/55.9)
17 3/4"-22 1/16" / 22 1/16"-21 11/16" / 21 11/16" (45-56/55.9-55/55)
75.0 (34.0)
115/60

* Estimated energy cost will depend on utility rates and use. Estimated energy cost based on a national average electricity cost of 12 cents per kWh.

** Noise output – according to EN 60704-3.



German Engineering: Our superior products offer premium quality, cutting edge design, and innovative features that best fit your lifestyle. The use of high quality materials, perfectly detailed finishes, and elite cooling components are combined with the latest production processes, resulting in an outstanding cooling product.



Soft System

SoftSystem: Liebherr's SoftSystem technology gently cushions the automatic door closing, preventing vibrations which can affect the quality of your finest wines.



Electronic Control

Precision electronics: The precise electronic control allows temperatures to be set to the exact desired degree, from 41°F to 68°F.



LED

LED Lighting: All Liebherr wine cabinets are equipped with innovative LED lighting, which emit minimal heat and no UV radiation, ideal for the optimal storage of wines.



Beech Wood Shelving: Liebherr wine cabinets are fitted with beech wood shelving, mounted on telescopic rails for easy and gentle access to wines. The handmade, untreated wood pullout shelves can hold a variety of bottle types.



Tip Open

TipOpen technology: When the door is gently tapped, TipOpen technology partially opens the appliance, facilitating further opening. If the door is not opened fully within three seconds, the door will self-close, ensuring that ideal air humidity is maintained within the cabinet.

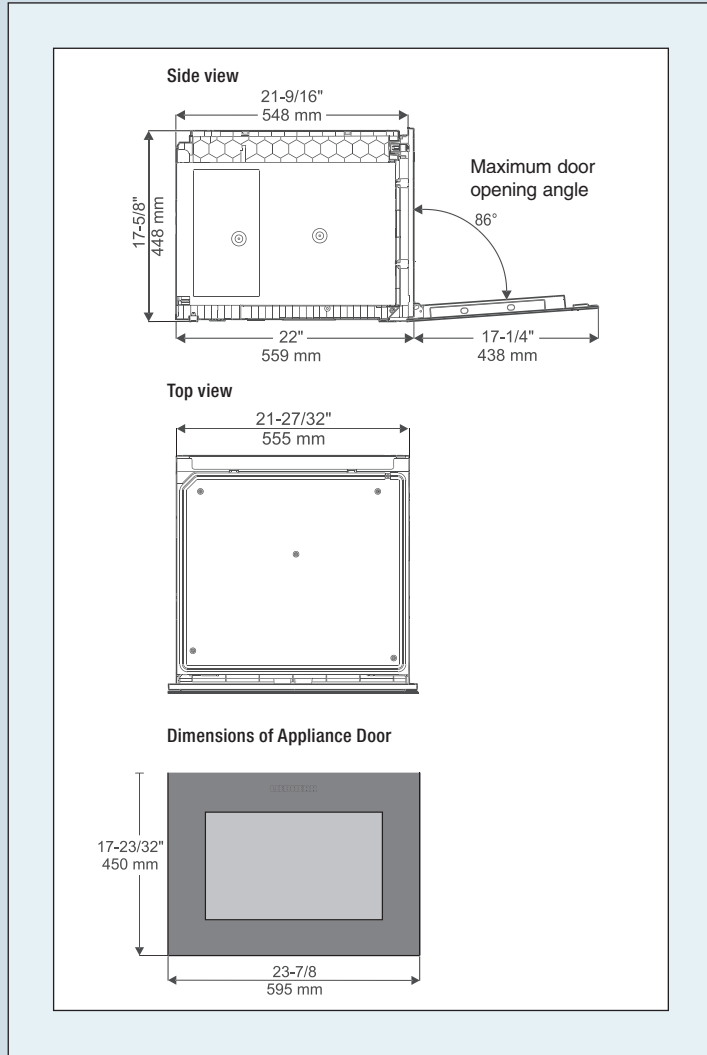


UV Protection: In order to minimize the exposure of light which can damage the maturity of a wine, Liebherr wine cabinets are fitted with special UV-resistant insulated glass, simultaneously protecting and presenting your finest wines.

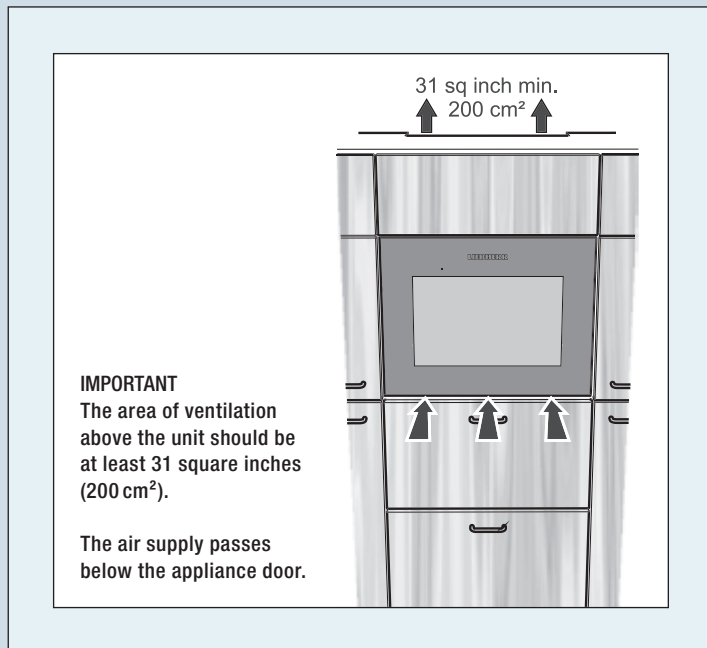


Alarm: Liebherr wine cabinets are equipped with a trustworthy alarm system which alerts the owner if the door has been left open, or if there are temperature changes.

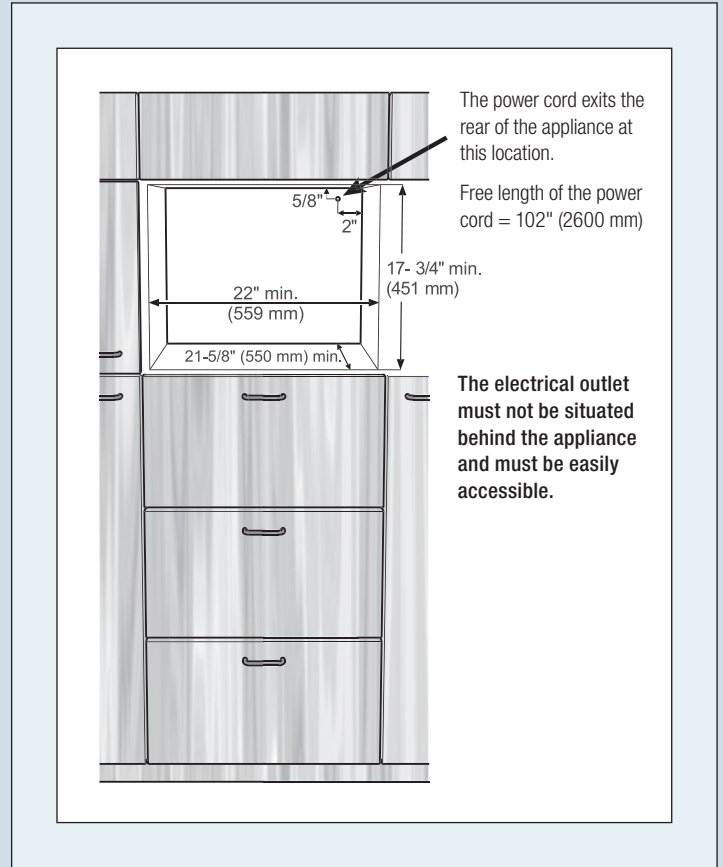
Appliance Dimensions



Ventilation



Cabinet Dimensions



Ventilation

