

Product: 30 Inch Wall Mount Hood

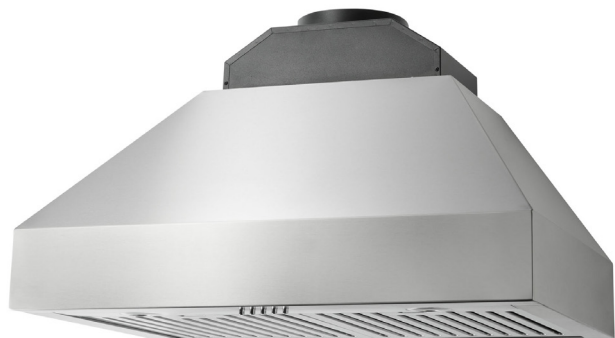
Model Number: TRH30P

BLOWER RATING

BLOWER RATINGS	CFM	(dBA)
Low	460 CFM	50
Medium	650 CFM	59
High	1,000 CFM	67

PRODUCT DIMENSIONS

Range Hood Size (in)	30
Product Width (in)	30
Product Depth (in)	20 1/2
Product Height (in)	14
Duct Length (in)	59
Duct Width (in)	7
Duct Diameter (in)	7
Duct Shape	Round
Gross Weight (lb.)	62.83



FEATURES & BENEFITS

- + **Powerful Suction** - 1,000 CFM of suction handles the odors, smoke and steam from multiple pots, pans and burners
- + **LED Lighting** - Two 3.5-watt LED lights to illuminate your cooking area and save energy
- + **Quiet Operation at High Speed** - Quiet operation keeps noise level at a maximum 67 decibels. Low speed: 530 CFM (50 dB); Medium speed: 700 CFM (59 dB); High speed: 1,000 CFM (67 dB)
- + **Convertible** - Vent out or recirculating (ductless) option with carbon filters (not included)
- + **Commercial-style Baffle Filter** - Large, commercial-style 430 grade stainless steel baffle filter maximizes air flow and grease filtering while the hood is in operation
- + **Push Button Controls** - Easy-to-operate push button controls for power, fan and light
- + **7-inch Round Duct Vent** - 7-inch round duct vent for better ventilation performance and efficiency
- + **Stainless Steel Finish** - Stainless steel finish offers modern design aesthetic and is built to withstand high heat, grease, oil and steam

TECHNICAL DETAILS

Lighting	LED light x 2
Power	110V
Frequency	60HZ
Amperage	6A
Filter type	430SS Baffle filter x 2
Blower type	Internal
Control type	Button, no auto shut off No delayed shut off
Color/Finish	Stainless steel
Installation Type	Wall Mount

ACCESSORIES (NOT INCLUDED)

Charcoal Filter	FT05
-----------------	------

LIMITED WARRANTY: 24 MONTHS ON PARTS ONLY



12" (305mm) Top Depth

